

PARKER SQUARE PHASE ONE IMPROVEMENTS

City of Waterville
03.18.2021

PROUDFOOT



— ASSOCIATES, INC. —
CONSULTING ENGINEERS

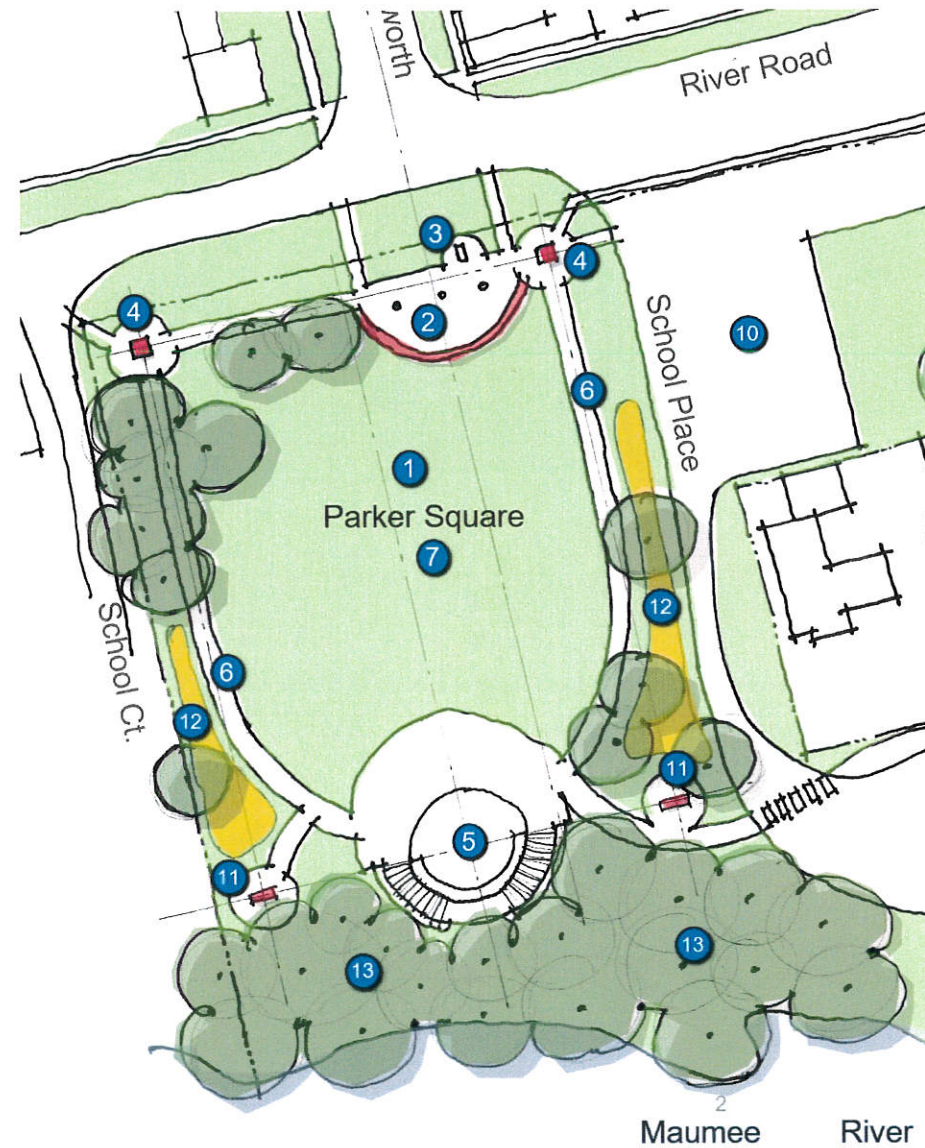


OVERARCHING GUIDELINES

THE COLLABORATIVE

The following Overarching Guidelines were developed through an open planning process by the Planning Committee and became the framework for the 2018 Parker Square and Memorial Park Master Plan.

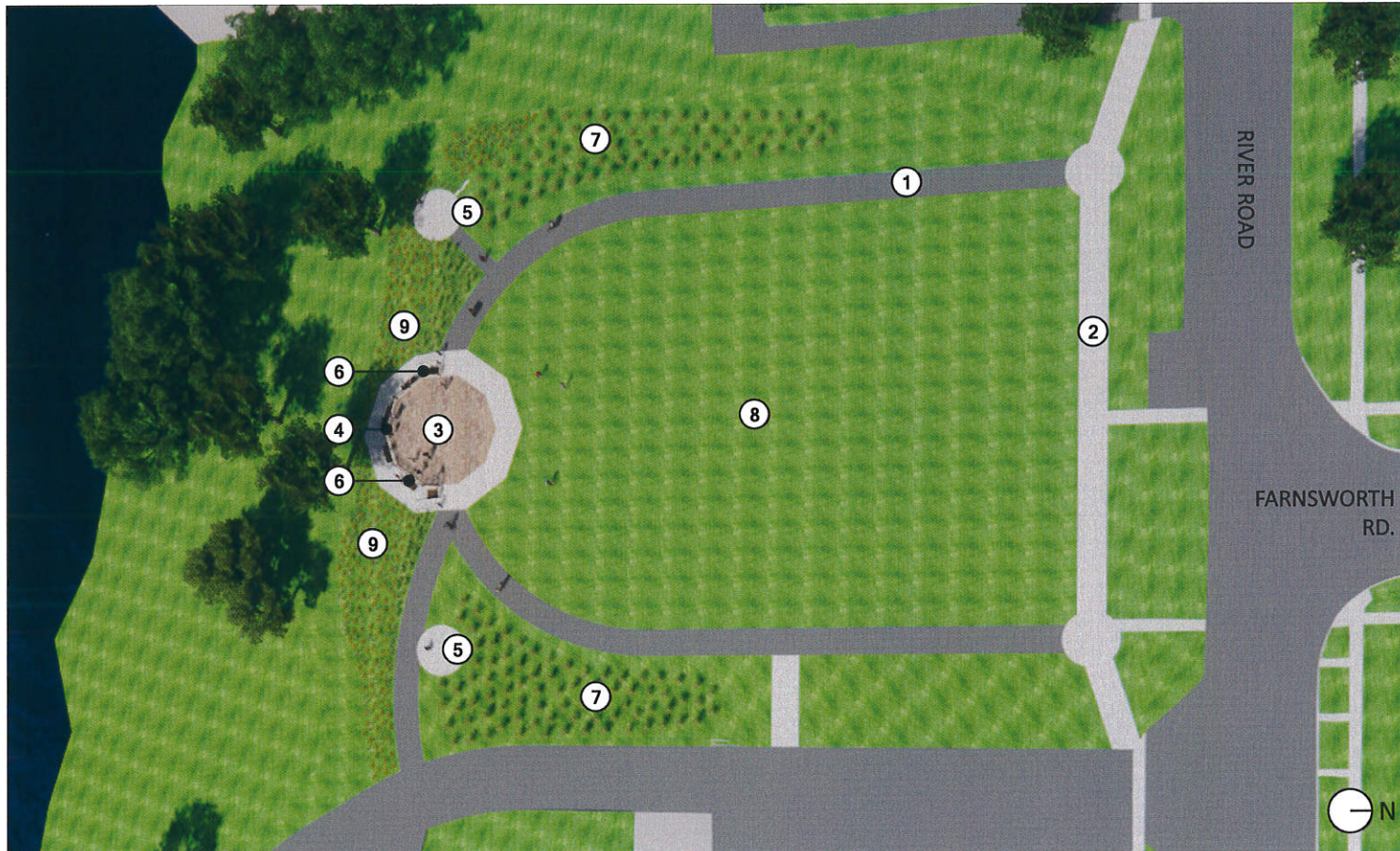
- **Reconnect to the River (visually + physically) in a passive/natural way.**
- Celebrate + frame the view from Farnsworth.
- Uplift historical features or qualities of the site.
- Develop a plan that can work with or without 19 School Place & 30 River Road.
- **Maintain the original public square as a passive open area.**



Maumee River

THE COLLABORATIVE

SITE DESIGN FEATURES

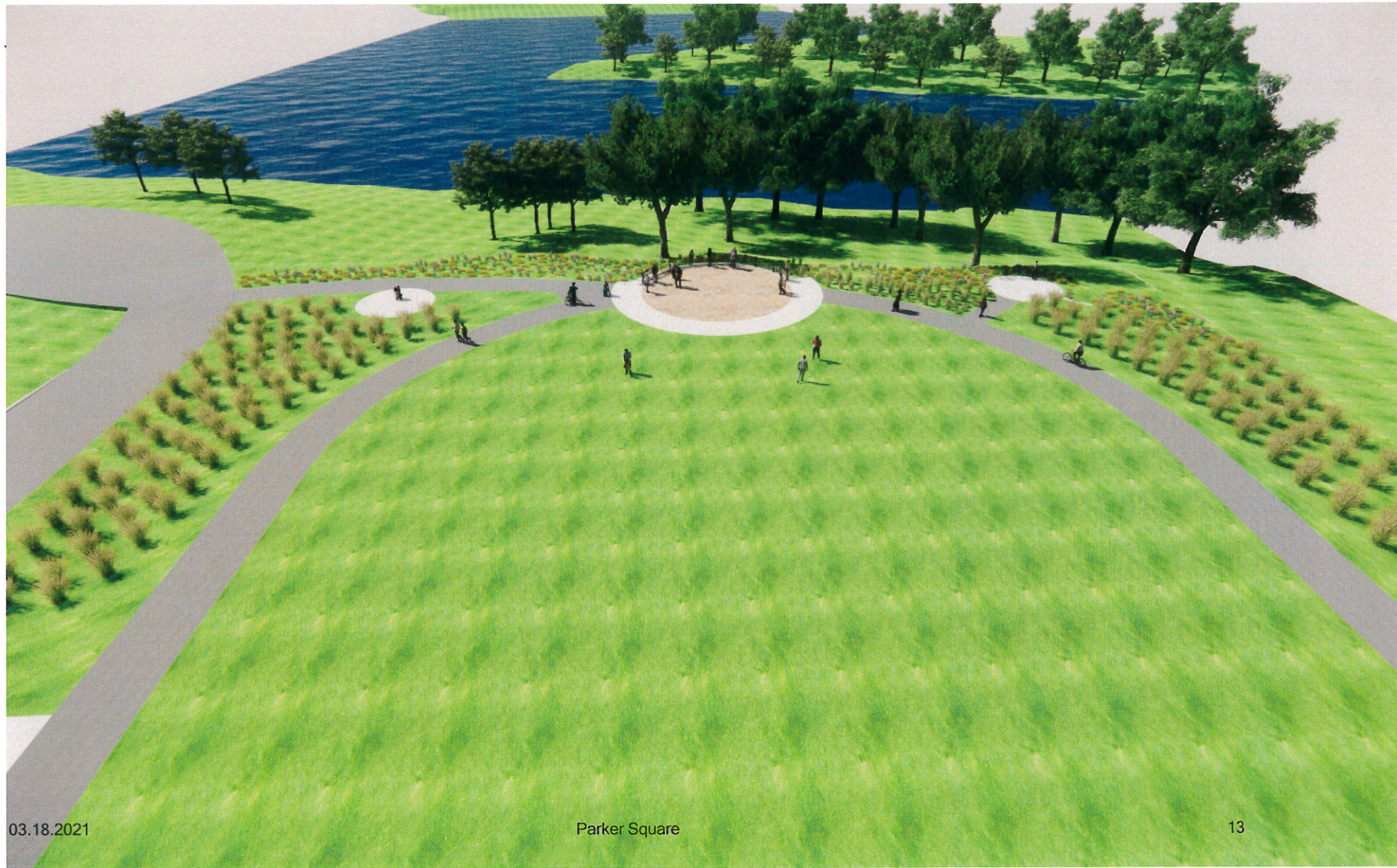


1. Asphalt path (10ft wide)
2. Concrete path (10ft wide)
3. Stamped concrete primary overlook
4. Masonry retaining wall with decorative metal guardrail
5. Secondary overlook with porch swing
6. Stairway
7. Bioretention swale with indigenous plants
8. Event lawn
9. Erosion-control indigenous plants

03.18.2021

Parker Square

ROUND OPTION



03.18.2021

Parker Square

13

ROUND OPTION



03.18.2021

Parker Square

14

ROUND OPTION



03.18.2021

Parker Square

17

ROUND OPTION



03.18.2021

Parker Square