



# Parker Square and Memorial Park 2018 Master Plan

City of Waterville

March 06, 2018



# Overarching Guidelines

- Reconnect to the River (visually + physically) in a passive/natural way
- Celebrate + frame the view from Farnsworth
- Uplift historical features or qualities of the site.
- Develop a plan that can work with or without the Valtin & Bonino property.
- Maintain the original public square as a passive open area



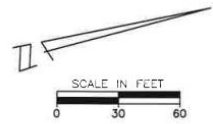
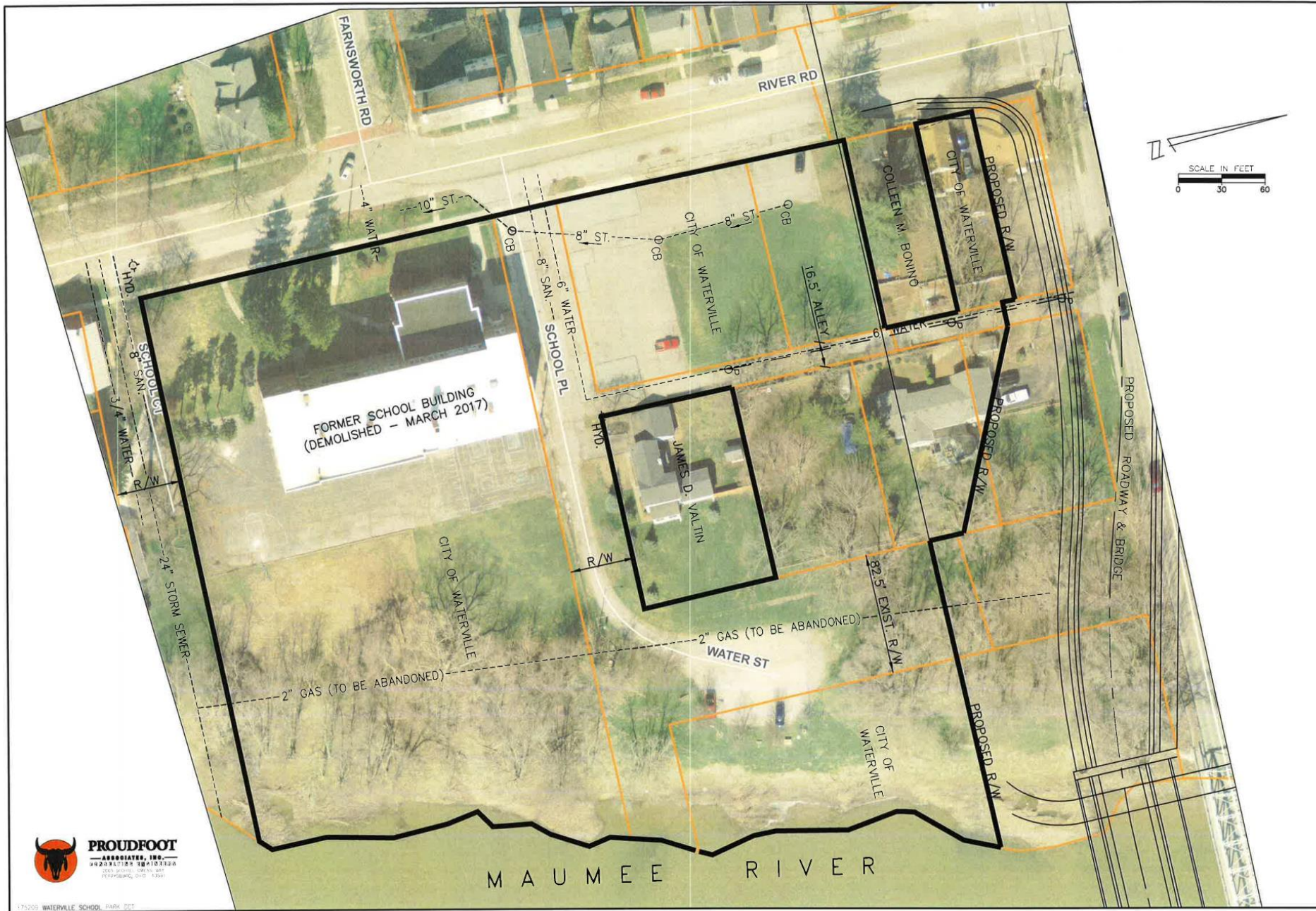


# Visioning Ideas

1. View down Farnsworth
2. Motor vehicle parking not necessary
3. Bike Parking. Develop leveled area under bridge into a path
4. Water access for canoes and kayaks
5. Public Restrooms
6. Plaques and education information
7. Open up water's edge
8. Not an active recreation park
9. Gateway structure/cannon – use salvaged bricks
10. How should items currently in Memorial Park be handled?
11. Chimney Swift Towers
12. River Road / Farnsworth Road Streetscape
13. Acquisition of Valtin property
14. Carillon
15. Suspension Bridge to the Island
16. Shelter structure
17. Concession stand – Food Trucks
18. Festival accommodations – electric
19. Porch swings – no playground
20. Keep original public square open
21. Screening along north & south side of park
22. Art/Sculpture
23. Path along river (walking. Biking)
24. Lighting – match Downtown lights
25. Develop use restrictions
26. Canoe/Kayak storage
27. Performance Venue
28. Bike racks
29. Trash containers
30. Drinking fountain w/ bottle filler and dog dish
31. Acquisition of Bonino property
32. Flag pole
33. Responsible / sustainable riverbank management practices







MAUMEE RIVER







**LEGEND "A" LIST #**

1. Parker Square
2. Entry Plaza  
Low Brick Wall w/ Signage  
3 Flagpoles  
School Building Artifacts  
Historical Plaques
3. Historic Cannon
4. Chimney Swift Towers
5. Overlook
6. 10 ft. wide Multi-Use Path
7. Event Lawn
8. Canoe Kayak Landing
9. Canoe Kayak Storage
10. Parking
11. Porch Swings
12. Rain Garden / Native Plantings
13. Native Riverbank Plantings

**LEGEND "B" LIST #**

1. Event Lawn / Performance Venue
2. "Stage Platform"
3. Public Restrooms, Carillon, Shelter, Concession Stand.
4. Natural Water Feature / Sprayground
5. Promenade Walk
6. Sidewalk

**March 06, 2018 Preliminary Master Plan**



